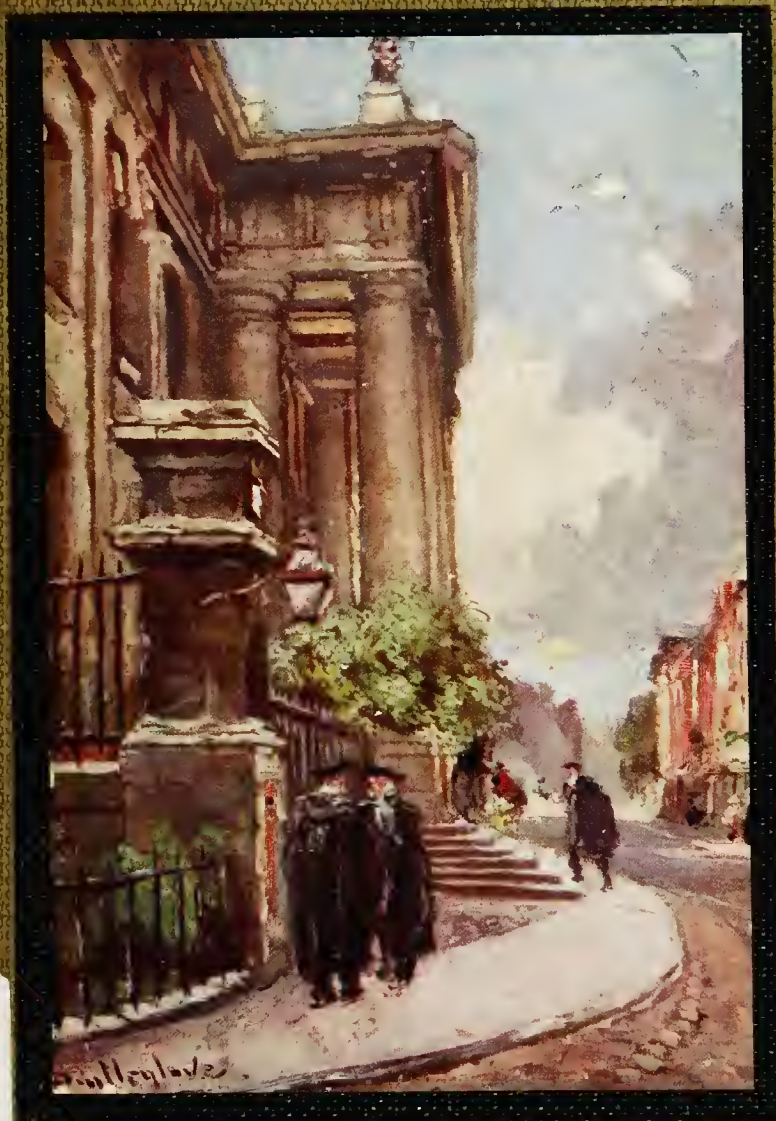
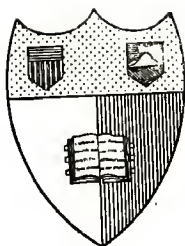


# OXFORD WATER-COLOURS



ND  
1942  
F97  
A3

JOHN FULLEYLOVE, R.I.



**Cornell University**

**Ithaca, New York**

---

**COLLEGE OF ARCHITECTURE**

**LIBRARY**

**From R. S. Harris**

---

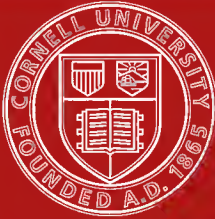
Cornell University Library  
ND 1942.F97A3

Oxford water-colours /



3 1924 016 793 451

fine



# Cornell University Library

The original of this book is in  
the Cornell University Library.

There are no known copyright restrictions in  
the United States on the use of the text.

<http://www.archive.org/details/cu31924016793451>





TOM TOWER, CHRISTCHURCH COLLEGE

The Tower to the level of the finial of the ogee-headed window is of the date of Wolsey's foundation ; the remaining part was added by Sir Christopher Wren.

# OXFORD

## WATER-COLOURS

By JOHN FULLEYLOVE, R.I.



A. & C. BLACK, LTD.  
4, 5 & 6 SOHO SQUARE, LONDON, W. 1

Artists

LIST OF VOLUMES IN  
**BLACK'S "WATER-COLOUR" SERIES**

- |  |  |
|--|--|
| <b>BERKSHIRE.</b> By Sutton Palmer                           | <b>ISLE OF MAN.</b> By A. Heston Cooper          |
| <b>BIRKET FOSTER</b>   | <b>ISLE OF WIGHT.</b> By A. Heaton Cooper        |
| <b>BUCKINGHAMSHIRE.</b> By Sutton Palmer                     | <b>KENT.</b> By Biscombe Gardner                 |
| <b>BURNS COUNTRY.</b> By George Houston,<br>A.R.S.A., R.S.W. | <b>LIVERPOOL.</b> By J. Hamilton Hay             |
| <b>CAMBRIDGE.</b> By William Matthison                       | <b>LONDON.</b> By various Artists                |
| <b>CHANNEL ISLANDS.</b> By H. B. Wimbush                     | <b>MESOPOTAMIA.</b> By Edith Cheesman            |
| <b>CHESTER.</b> By E. Harrison Compton                       | <b>NILE, THE.</b> By Ella du Cane                |
| <b>CORNWALL.</b> By G. F. Nicholls                           | <b>NORTH WALES.</b> By Robert Fowler             |
| <b>COTSWOLDS.</b> By G. F. Nicholls                          | <b>OXFORD.</b> By John Fulleylove, R.I.          |
| <b>COTTAGES OF ENGLAND.</b> By Helen<br>Allingham            | <b>SCOTT COUNTRY.</b> By various Artists         |
| <b>DICKENS COUNTRY.</b> By various Artists                   | <b>SCOTTISH HIGHLANDS.</b> By various<br>Artists |
| <b>EDINBURGH.</b> By John Fulleylove, R.I.                   | <b>SURREY.</b> By Sutton Palmer                  |
| <b>ENGLISH LAKES.</b> By A. Heston Cooper                    | <b>SUSSEX.</b> By Wilfrid Ball, R.E.             |
| <b>ESSEX.</b> By Burleigh Bruhl                              | <b>SWITZERLAND.</b> By various Artists           |
| <b>ETON.</b> By E. D. Briston                                | <b>WARWICKSHIRE.</b> By Fred Whitehead           |
| <b>GALLOWAY.</b> By James Faed, Junr.                        | <b>WINDSOR.</b> By G. M. Heaton                  |
| <b>HAMPSHIRE.</b> By Wilfrid Ball, R.E.                      | <b>WORCESTERSHIRE.</b> By Thomas Tydale          |
| <b>HARDY COUNTRY.</b> By Walter Tydale                       | <b>WYE, THE.</b> By Sutton Palmer                |
| <b>HOLY LAND.</b> By John Fulleylove, R.I.                   |  |

A. & C. BLACK, LTD., 4, 5 & 6 SOHO SQUARE, LONDON, W. 1.



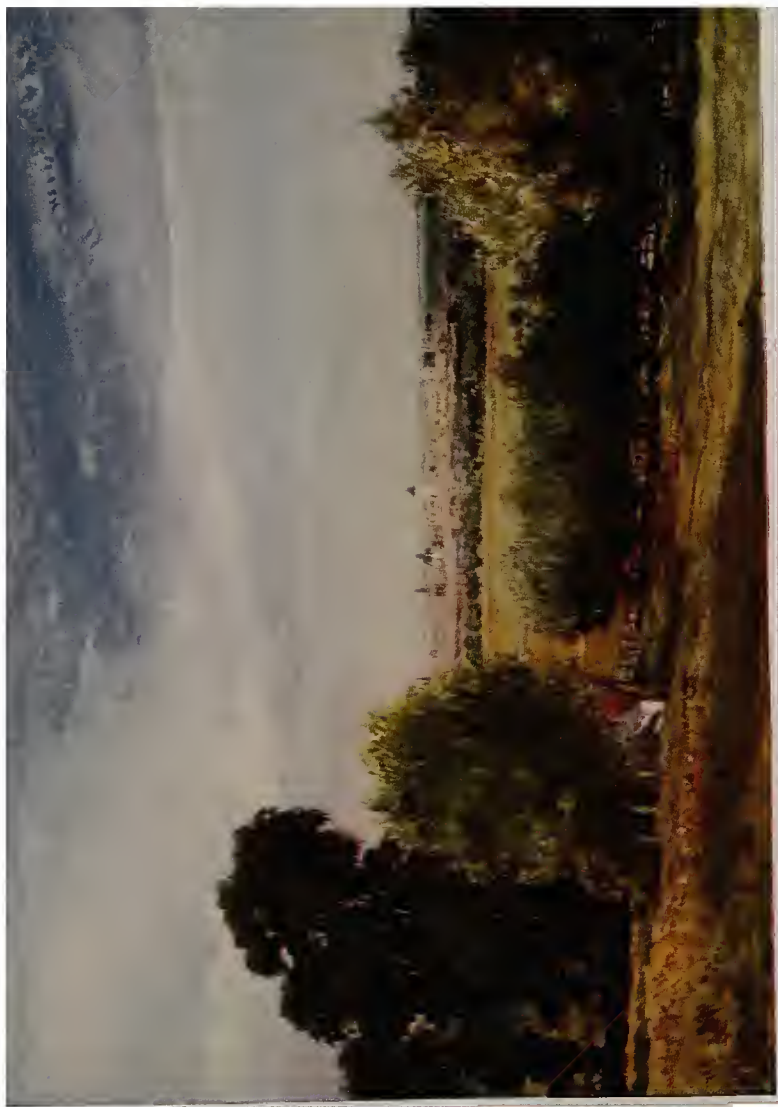
# LIST OF WATER-COLOURS

By JOHN FULLEYLOVE, R.I.

1. Tom Tower, Christchurch College *Frontispiece*
2. Oxford, from South Hinksey
3. Broad Street, looking West
4. Oxford, from the Sheldonian Theatre
5. The University Church of St. Mary
6. St. Giles's, looking towards St. Mary Magdalen  
(South)
7. Oriel College
8. Interior of the Bodleian Library
9. The Cloisters, Magdalen College
10. Magdalen Tower and Bridge
11. All Souls' College and the High Street
12. Corpus Christi College
13. Christchurch: Peckwater Quadrangle
14. The Radcliffe Library, or Camera Bodleiana,  
from All Souls' College
15. Entrance Gateway of Hertford College and the  
Radcliffe Library
16. All Saints' Church from Turl Street
17. The Entrance to Queen's College from Logic  
Lane
18. The River Isis
19. The Library, Oriel College
20. The Clarendon Building, Broad Street

*On the Cover*





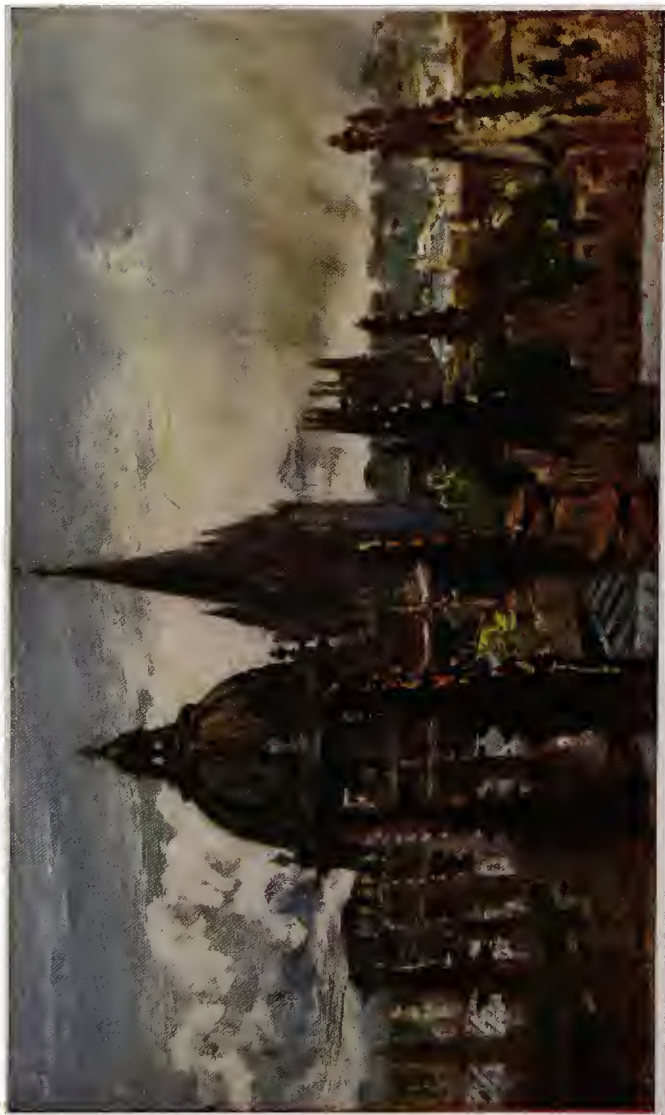
OXFORD, FROM SOUTH HINKSEY





BROAD STREET, LOOKING WEST

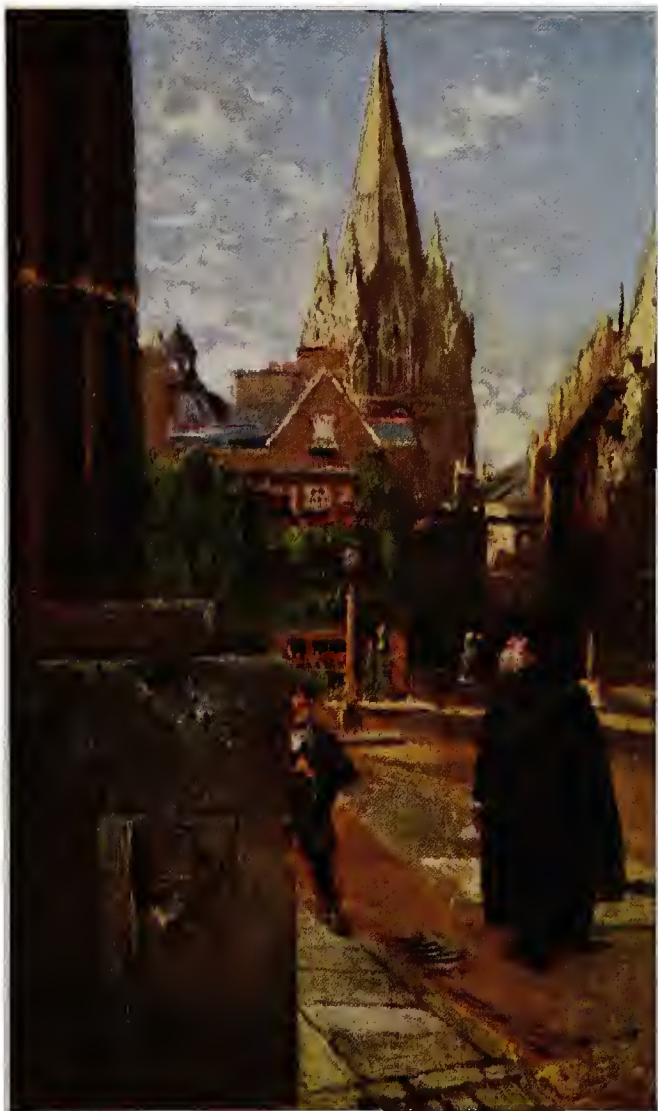




OXFORD, FROM THE SHELDONIAN THEATRE







THE UNIVERSITY CHURCH OF ST. MARY

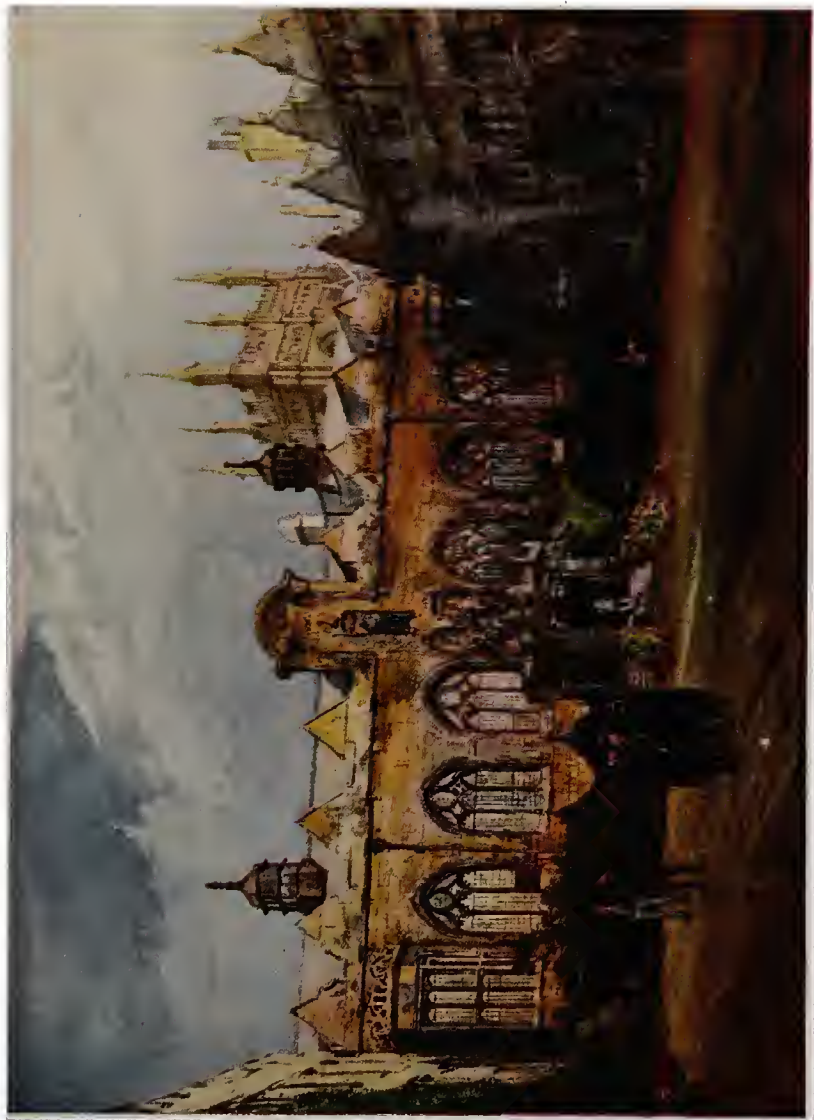
The buildings on the extreme right of the picture are those belonging to Oriel College.





ST. GILES, LOOKING TOWARDS ST. MARY MAGDALEN (SOUTH)





ORIEL COLLEGE





INTERIOR OF THE BODLEIAN LIBRARY







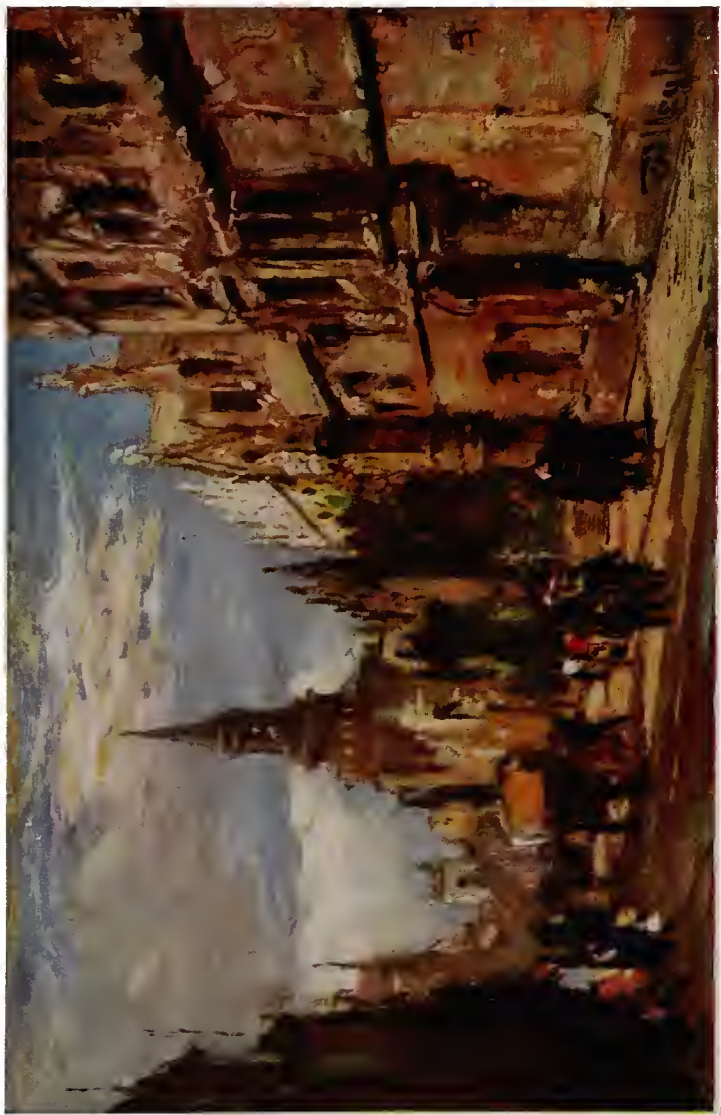
THE CLOISTERS, MAGDALEN COLLEGE





MAGDALEN TOWER AND BRIDGE





ALL SOULS' COLLEGE AND THE HIGH STREET





CORPUS CHRISTI COLLEGE

In the centre of the quadrangle rises a cylindrical dial surmounted by a "pelican in her piety," the badge of the Founder of the College.







CHRISTCHURCH : PECKWATER QUADRANGLE

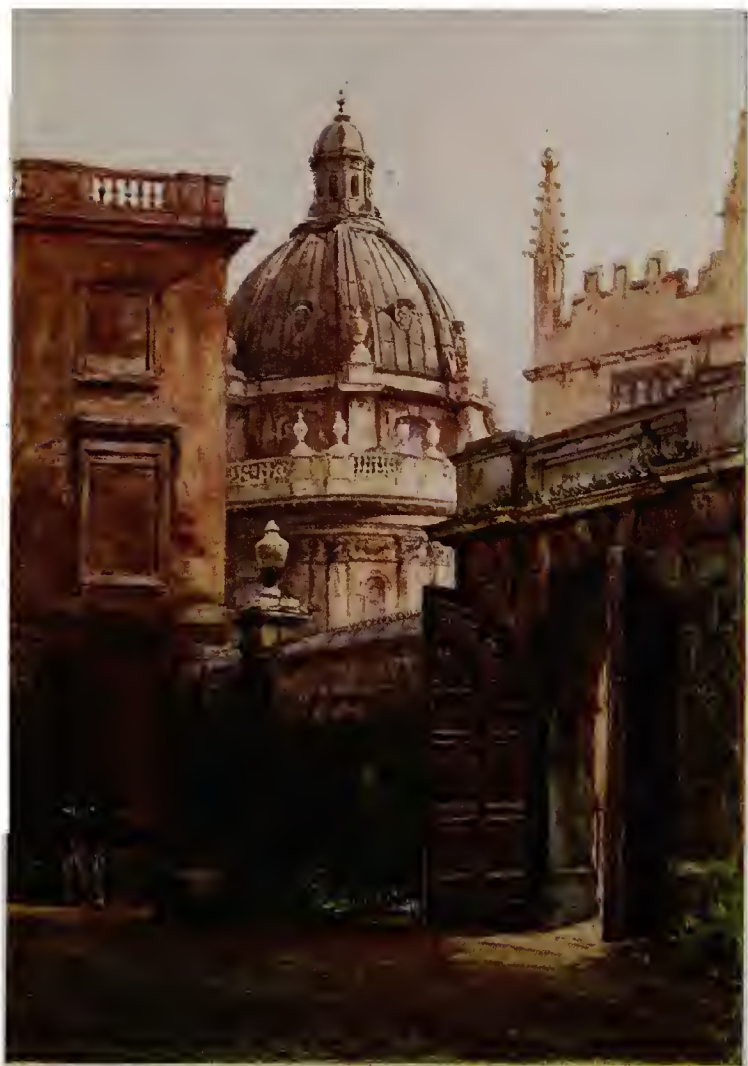




THE RADCLIFFE LIBRARY, OR CAMERA BODLEIANA, FROM  
ALL SOULS' COLLEGE

This dome may compare with some of the finest in Europe.





ENTRANCE GATEWAY OF HERTFORD COLLEGE AND  
THE RADCLIFFE LIBRARY



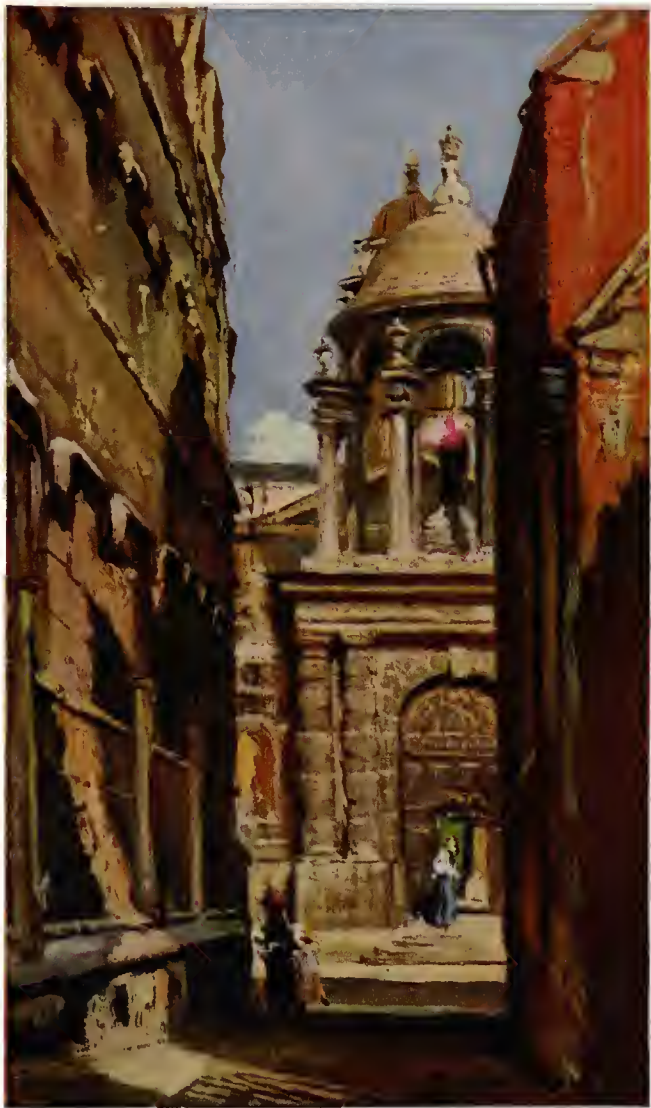


ALL SAINTS' CHURCH FROM TURL STREET

All Saints' Church was built in 1708 from a design by Dr. Aldrich,  
Dean of Christchurch.

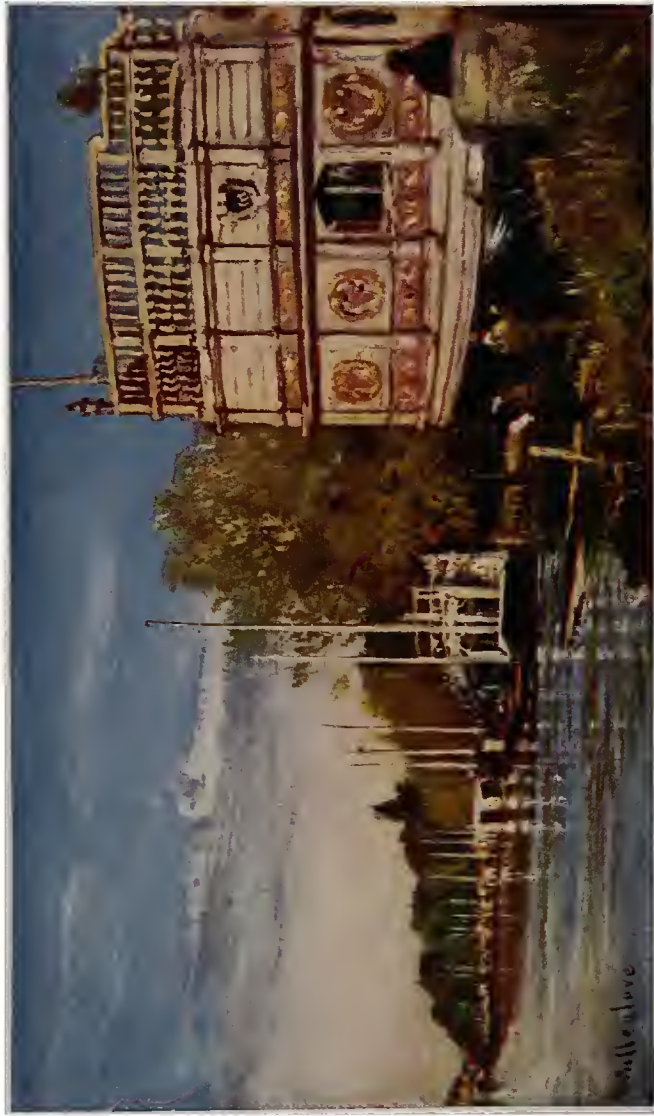






THE ENTRANCE TO QUEEN'S COLLEGE FROM LOGIC LANE  
The statue is that of Queen Caroline, Consort of George II.

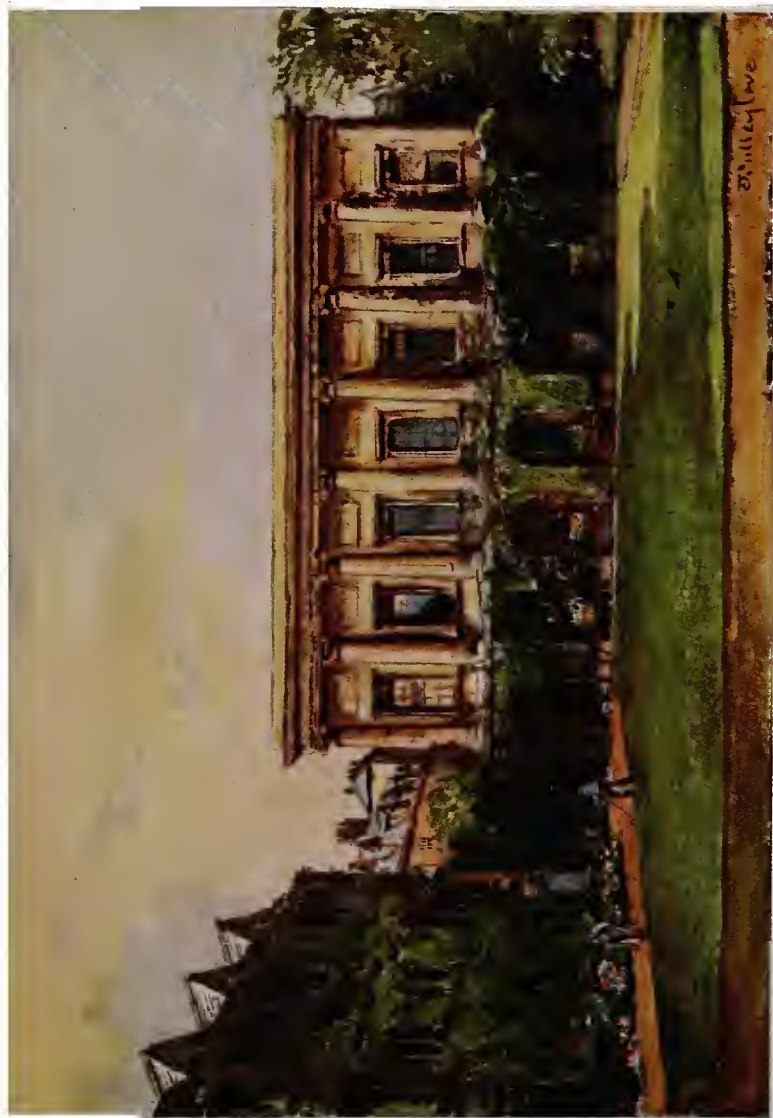




THE RIVER ISIS

On the right is the gold and white barge of Magdalen College undergoing repair. The masts and barges of other colleges line the side of the river, and Folly Bridge closes the prospect.





THE LIBRARY, ORIEL COLLEGE

A dignified building of the Ionic order of architecture, designed by James Wyatt about 1788











